

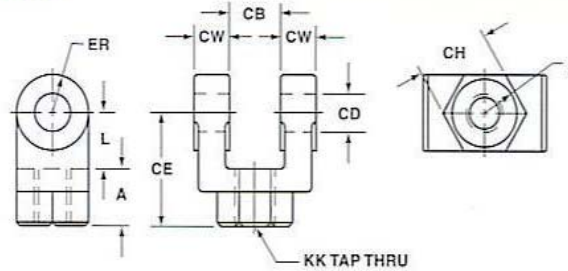
SB PACKING HOUSE — EQUIPMENT —

STANDARD CYLINDER CLEVISES



ROD CLEVISES

ROD CLEVISES



PART #	CB	CD	CE	CH	CW	F	L	A	KK	ER
BDC-05	.765	1/2	1 1/2	1	1/2	1	3/4	3/4	7/16 - 20	1/2
BDC-07	1.265	3/4	2 3/8	1 1/4	5/8	1 1/4	1 1/4	1 1/8	3/4 - 16	3/4
BDC-07M	1.265	3/4	2 1/8	1 3/8	5/8	1 1/4	1	1 1/8	3/4 - 16	3/4
BDC-10	1.515	1	3 1/8	1 1/2	3/4	1 1/2	1 1/2	1 5/8	1 - 14	1
BDC-10M	1.515	1	2 15/16	1 1/2	3/4	1 5/8	1 5/16	1 5/8	1 - 14	1
BDC-13	2.032	1 3/8	4 1/8	2	1	2	2 1/8	2	1 1/4 - 12	1 3/8
BDC-13M	2.032	1 3/8	3 3/4	2	1	2	1 3/4	2	1 1/4 - 12	1 3/8
BDC-17	2.531	1 3/4	4 1/2	2 3/8	1 1/4	2 3/8	2 1/4	2 1/4	1 1/2 - 12	1 3/4
BDC-20	2.531	2	5 1/2	2 15/16	1 1/4	2 15/16	2 1/2	3	1 7/8 - 12	2
BDC-25	3.032	2 1/2	6 1/2	3 1/2	1 1/2	3 1/2	3	3 1/2	2 1/4 - 12	2 1/2
BDC-30	3.032	3	6 3/4	3 7/8	1 1/2	3 7/8	3 1/4	3 1/2	2 1/2 - 12	2 3/4
BDC-30M	3.032	3	6 3/4	3 7/8	1 1/2	3 7/8	3 1/4	3 1/2	2 1/2 - 12	3
BDC-35	4.032	3 1/2	8 1/2	5	2	5	4	4 1/2	3 1/4 - 12	3 1/2
BDC-35M	4.032	3 1/2	7 3/4	5	2	5	4 1/4	3 1/2	3 1/4 - 12	3 1/2
BDC-40	4.532	4	10	6 1/8	2 1/4	6 1/8	4 1/2	5 1/2	4 - 12	4

MATERIAL: 05 thru 10, 1144 Steel Forging; 13 thru 40, Ductile Iron Casting;
05 thru 10, 303 Stainless Steel Forging or 316 Stainless Steel Flat Stock
METRIC THREADS: "KK" available from stock; specials on request

Note all sizes not available from stock. Allow 2-3 weeks for delivery of BDC 25 and above.

Quantity Discounts Available Pins supplied with snap ring standard.

Clevis PN#	Our PN#	Pin PN#	Our PN#
BDC-05	290031	BDC-05-PIN	290032
BDC-07	290033	BDC-07-PIN	290034
BDC-10	290035	BDC-10-PIN	290036
BDC-13	290037	BDC-13-PIN	290038
BDC-17	290039	BDC-17-PIN	290040
BDC-20	290041	BDC-20-PIN	290042
BDC-25	290043	BDC-25-PIN	290044
BDC-30	290045	BDC-30-PIN	290046