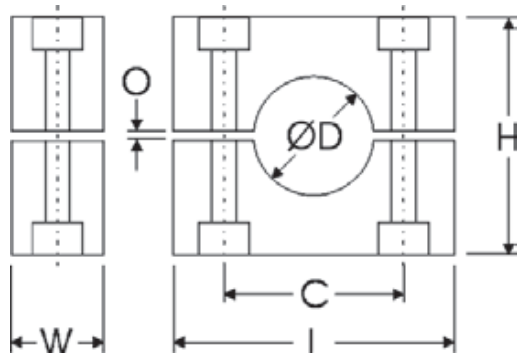
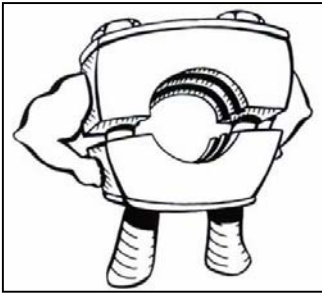


HEAVY DUTY HYDRAULIC PIPE CLAMPS



PIPE SIZE	PART NUMBER	OD	"C" DIM	"L" DIM	"H" DIM	"W" DIM	"O" DIM
1/4"	330001	.540	1.300	2.250	1.375	1.188	.063
3/8"	330002	.675	1.300	2.250	1.375	1.188	.063
1/2"	330003	.840	1.770	2.750	1.875	1.188	.063
3/4"	330004	1.050	1.770	2.750	1.875	1.188	.063
1"	330005	1.315	2.360	3.344	2.375	1.188	.063
1-1/4"	330006	1.660	3.530	4.500	3.500	1.688	.125
1-1/2"	330005	1.900	3.530	4.500	3.500	1.688	.125
2"	330006	2.375	3.530	4.500	3.500	1.688	.125
2-1/2"	330007	2.875	4.810	6.000	4.750	2.188	.125
3"	330008	3.500	4.810	6.000	4.750	2.188	.125
4"	330009	4.500	6.620	8.063	6.625	2.938	.188



CLAMP MATERIAL IS POLYPROPYLENE FOR STANDARD APPLICATIONS. ALUMINUM AVAILABLE FOR HIGH TEMP APPLICATIONS. SANTOPRENE AVAILABLE FOR CHEMICAL APPLICATIONS. CALL FOR SPECIAL PRICING ON THESE ITEMS. OTHER SIZES AND CONFIGURATIONS AVAILABLE. STAINLESS AND ZINC AVAILABLE UPON REQUEST **QUANTITY DISCOUNTS AVAILABLE**



www.sbparking.com

970-304-8388

www.sbparking.com