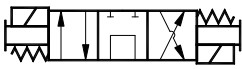




# HYDRAULIC DIRECTIONAL VALVES D08



## D08 Valves



Typical application is a cyl on a fixed displacement pump with relief valve. Often referred to as an open center valve. Oil is allowed to go through the center of valve when de energized. 3 pos valve spring center

PN# 250112

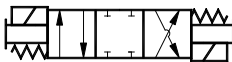
MFG PN# DSHG-06-3C60-A120-5390



Typical application is a bi directional motor on a pressure compensated pump. Can also be used with one coil for a single directional motor. P port blocked a and b open to tank to allow motor to coast down. 3 pos valve spring center

PN# 250113

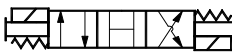
MFG PN# DSHG-06-3C4-A120-5390



Typical application is a cylinder on a pressure compensated pump. All ports blocked in de energized position. 3 pos valve spring center

PN# 250114

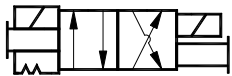
MFG PN# DSHG-06-3C2-A120-5390



Typical application is a motor on a fixed displacement pump. All ports open in de energized position. 3 pos valve spring center

PN# 250115

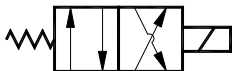
MFG PN# DSHG-06-3C3-A120-5390



Typical application is a cylinder that will be energized each way to actuate. 2 position detented valve double coil.

PN# 250116

MFG PN# DSHG-06-2N2-A120-5390



Typical application is a cylinder that will be energized to move one way and de energized to move the cylinder the other way. 2 position single coil

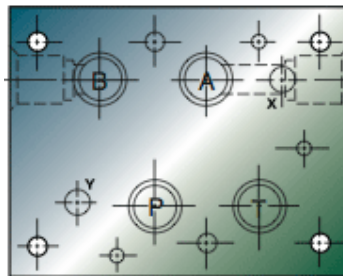
PN#250117

MFG PN# DSHG-06-2B2-A120-5390

## Notes on all valves

- All valves come standard with 1/2" conduit connections for wiring. Other connections available from factory.
- Bolt kits for standard valve mount included
- Assemblies can be supplied upon request
- Other valve configurations available from factory
- Valves come with pin type manual override

Feel free to call with questions regarding valve configurations. Many other configurations available from factory.



## D08 Valve Pattern

20-50 GPM

Call for Higher flows

