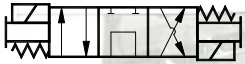


HYDRAULIC DIRECTIONAL VALVES D03 and D05



D03 Valves

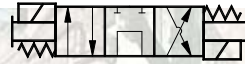


Typical application is a cyl on a fixed displacement pump with relief valve. Often referred to as an open center valve. Oil is allowed to go through the center of valve when de energized. 3 pos valve spring center

PN# 250100

MFG PN# DSG-01-3C60-A120-7090

D05 Valves



Typical application is a cyl on a fixed displacement pump with relief valve. Often referred to as an open center valve. Oil is allowed to go through the center of valve when de energized. 3 pos valve spring center

PN# 250106

MFG PN# DSG-03-3C60-A120-5090



Typical application is a bi directional motor on a pressure compensated pump. Can also be used with one coil for a single directional motor. P port blocked a and b open to tank to allow motor to coast down. 3 pos valve spring center

PN# 250101

MFG PN# DSG-01-3C4-A120-7090



Typical application is a bi directional motor on a pressure compensated pump. Can also be used with one coil for a single directional motor. P port blocked a and b open to tank to allow motor to coast down. 3 pos valve spring center

PN#250107

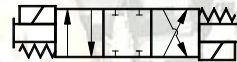
MFG PN# DSG-03-3C4-A120-5090



Typical application is a cylinder on a pressure compensated pump. All ports blocked in de energized position. 3 pos valve spring center

PN# 250102

MFG PN# DSG-01-3C2-A120-7090



Typical application is a cylinder on a pressure compensated pump. All ports blocked in de energized position. 3 pos valve spring center

PN#250108

MFG PN# DSG-03-3C2-A120-5090



Typical application is a motor on a fixed displacement pump. All ports open in de energized position. 3 pos valve spring center

PN# 250103

MFG PN# DSG-01-3C3-A120-7090



Typical application is a motor on a fixed displacement pump. All ports open in de energized position. 3 pos valve spring center

PN#250109

MFG PN# DSG-03-3C3-A120-5090



Typical application is a cylinder that will be energized each way to actuate. 2 position detented valve double coil.

PN#250104

MFG PN# DSG-01-2D2-A120-7090



Typical application is a cylinder that will be energized each way to actuate. 2 position detented valve double coil.

PN#250110

MFG PN# DSG-03-2D2-A120-5090



Typical application is a cylinder that will be energized to move one way and de energized to move the cylinder the other way. 2 position single coil



Typical application is a cylinder that will be energized to move one way and de energized to move the cylinder the other way. 2 position single coil

PN#250105

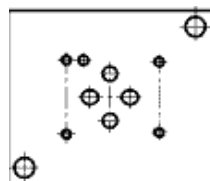
MFG PN# DSG-01-2B2-A120-7090

PN#250111

MFG PN# DSG-03-2B2-A120-5090

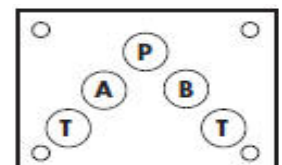
D03 Valve Pattern

0-15 GPM



D05 Valve Pattern

10-25 GPM



www.sbpacking.com

970-304-8388

www.sbpacking.com